

Your guide to Sleeper OS!



Z SLEEPER
OS

Fernández, Alejo
Sleeper OS Guide / Alejo Fernandez;
San Sebastián de los Reyes, Madrid, Spain,
Self Made, 2024, .
Digital Book, PDF
Digital File: Download & online

Design of the cover, production, text,
and everything else by Alejo Fernández
Computer icon by FontAwesome
San Sebastián de los Reyes, Madrid, Spain.
Printed in Spain
Free distribution, Not for sale

Welcome to Sleeper OS!



Welcome to Sleeper OS, a Linux distribution designed to be your trusted partner in efficiency and customization. Whether you're a seasoned Linux user or embarking on your first journey into the open-source world, Sleeper OS is crafted to meet your needs with elegance and simplicity.

What is Sleeper OS?

Sleeper OS is more than just an operating system; it's a community-driven project built on the principles of freedom and flexibility. With a focus on minimalism and performance, Sleeper OS empowers you to create a computing environment that aligns perfectly with your workflow and aesthetic preferences.

Key Features

Lightweight and Fast

Sleeper OS is engineered to be lightweight, ensuring that your system resources are utilized efficiently. This means faster boot times, quicker application launches, and a more responsive computing experience, even on older hardware.

Customizable

From the desktop environment to the core components, every aspect of Sleeper OS can be tailored to your liking. Choose from a wide array of themes, extensions, and configuration options to build your perfect desktop.

Secure and Stable

Security is a top priority in Sleeper OS. Regular updates, robust security features, and a vigilant community help safeguard your system against vulnerabilities. Stability is also paramount, providing a reliable platform for both personal and professional use.

Getting Started

Installation

Installing Sleeper OS is straightforward. Our intuitive installer guides you through the process step-by-step, making it easy for users of all levels to get up and running quickly.

First Steps

Once installed, take a moment to familiarize yourself with the desktop environment and the included applications. Explore the settings to begin customizing your system. Check out our extensive documentation and forums for tips and support.

Support and Resources

Our community Mastodon and wiki are great places to find help, share experiences, and connect with other users. Whether you need troubleshooting advice or want to contribute to the project, there's a place for you in the Sleeper OS community.



Desktop environments



Sleeper OS offers a variety of desktop environments, each designed to enhance your computing experience in unique ways. Whether you prefer the classic look and feel of Trinity, the modern interface of KDE (Plasma), the simplicity of GNOME, or the lightweight efficiency of XFCE, Sleeper OS has something for everyone.

Trinity Desktop Environment (TDE)

Trinity Desktop Environment (TDE) is the default choice for Sleeper OS. TDE is a continuation of the KDE 3.5 series, providing a familiar, classic desktop experience. It combines the best of traditional desktop design with the stability and performance improvements of modern Linux distributions.

Key Features of TDE:

Classic Interface: Enjoy the timeless look and feel of KDE 3.5 with modern enhancements.

Highly Customizable: Tailor your desktop with a plethora of themes, widgets, and settings.

Stable and Lightweight: Designed for speed and reliability, making it suitable for both new and older hardware.

OK (KDE)

OK is the Sleeper OS flavor featuring the KDE Plasma desktop environment. KDE Plasma is known for its stunning visuals and extensive customization options, providing a sleek and modern user experience.

Key Features of OK (KDE):

Modern Aesthetics: Beautiful and highly polished user interface.

Advanced Customization: Customize every aspect of your desktop with ease.

Powerful Applications: Access a wide range of KDE applications designed for productivity and entertainment.

Performance Optimization: Despite its rich features, KDE Plasma is optimized for performance.

Snow White (GNOME)

Snow White is the Sleeper OS flavor that utilizes the GNOME desktop environment. GNOME is renowned for its simplicity and ease of use, offering a clean and intuitive interface that emphasizes productivity.

Key Features of Snow White (GNOME):

Minimalistic Design: Focuses on simplicity and usability with a clean and straightforward interface.

Productivity-Focused: Features like GNOME Shell and Activities Overview streamline your workflow.

Extensions Support: Enhance and extend your desktop with a wide range of extensions.

Accessibility: Designed with accessibility in mind, making it easy to use for everyone.





Ratolí (XFCE)

Ratolí is the Sleeper OS flavor that includes the XFCE desktop environment. XFCE is known for being lightweight and resource-efficient, making it an excellent choice for users who prioritize performance and speed.

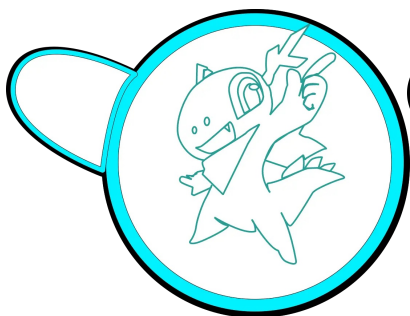
Key Features of Ratolí (XFCE):

Resource Efficiency: Minimal system resource usage, ideal for older hardware or systems with limited resources.

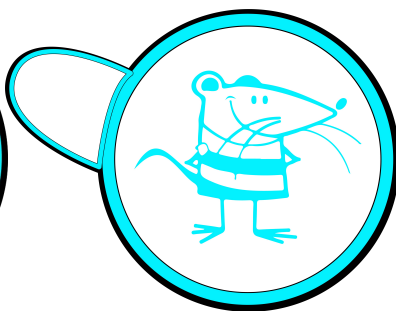
Fast and Responsive: Quick to start and responsive during use, providing a smooth user experience.

Customizable: While lightweight, XFCE offers plenty of customization options to suit your preferences.

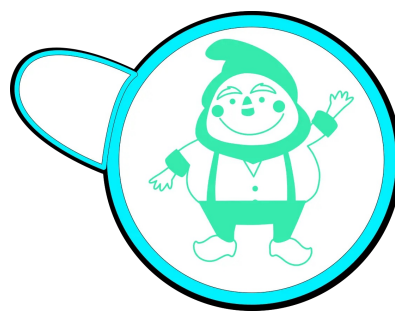
Stable and Reliable: Built for stability, ensuring a consistent and dependable desktop environment.



OK (Plasma)



Ratolí (XFCE4)



Snow White (GNOME)



Installation

Installing Sleeper OS is a straightforward process, thanks to its foundation on AntiX. Regardless of the desktop environment you choose—Trinity Desktop Environment (TDE), OK (KDE), Snow White (GNOME), or Ratolí (XFCE)—the installation method remains consistent and user-friendly.

System Requirements

Before you begin the installation, ensure that your system meets the following minimum requirements:

- Processor: 1 GHz or faster
- RAM: 512 MB (1 GB recommended for a smoother experience)
- Storage: 5 GB of free disk space
- Display: 800x600 resolution (1024x768 recommended)

Steps to Install Sleeper OS

1. Download the ISO:

Visit the official Sleeper OS website and download the ISO file for your preferred desktop environment.

2. Create a Bootable USB Drive:

Use a tool like `Rufus` (Windows), `Etcher` (cross-platform), or `dd` (Linux) to create a bootable USB drive with the downloaded ISO file.

3. Boot from USB:

- Insert the bootable USB drive into your computer and restart it.
- Enter the BIOS/UEFI setup (usually by pressing a key like F2, F12, DEL, or ESC during startup) and set your computer to boot from the USB drive.

4. Start the Live Environment:

- Once your computer boots from the USB drive, you'll be presented with the Sleeper OS live environment. Here, you can try out the system before installation.

5. Open the Terminal:

- Launch the terminal from the live environment.

6. Run the Installer:

- In the terminal, type the following command to start the installation process:

```
Terminal — [X]
sudo minstall
```

- Press 'Enter' and follow the on-screen prompts to proceed with the installation.

7. Partitioning and Installation:

- The installer will guide you through the partitioning process. You can choose to automatically partition the disk or manually create your partitions if you prefer.
- Continue following the prompts to configure your user account, timezone, and other settings.

8. Complete the Installation:

- Once the installation process is complete, the installer will prompt you to reboot your system.
- Remove the USB drive and press `Enter` to restart your computer.

9. Boot into Sleeper OS:


- After rebooting, your computer should boot into the freshly installed Sleeper OS.
- Log in with the credentials you set up during the installation process.

Post-Installation Setup

Now that you have Sleeper OS installed, take a moment to explore and customize your new operating system:

- Update the System

Open the terminal and run the following commands to update your system:

```
Terminal   
  
sudo apt update  
sudo apt upgrade
```

Explore the Desktop Environment

Familiarize yourself with the features and customization options of your chosen desktop environment. Whether you're using TDE, OK, Snow White, or Ratolí, there are plenty of settings to tweak to make Sleeper OS your own.



Conclusion



You've successfully installed Sleeper OS, a powerful and customizable Linux distribution designed to enhance your computing experience. Whether you're enjoying the classic Trinity Desktop Environment (TDE), the modern flair of OK (KDE), the simplicity of Snow White (GNOME), or the lightweight efficiency of Ratolí (XFCE), we're confident that Sleeper OS will meet your needs and exceed your expectations.

Next Steps

- Explore and Customize: Dive into the settings and personalize your desktop environment to make Sleeper OS truly your own.
- Join the Community: Connect with other Sleeper OS users on our Mastodon, or just contact us. Share your experiences, get support, and contribute to the project.
- Stay Updated: Regularly check for system updates to keep your system secure and up-to-date with the latest features and improvements.
- Learn and Grow: Take advantage of the wealth of resources available, including our documentation, tutorials, and community support, to expand your knowledge and skills.

Thank You

We want to extend our heartfelt thanks to everyone who makes Sleeper OS possible:

- Our Community: To all our users, contributors, and supporters—your feedback, contributions, and enthusiasm drive the continuous improvement and growth of Sleeper OS. Thank you for being a vital part of our journey.
- Open Source Community: Sleeper OS is built on the shoulders of giants. We are grateful to the broader open-source community for their invaluable contributions and commitment to software freedom.

Stay Connected

Stay connected with us for the latest news, updates, and community events:

- Website: sleeperos.sourceforge.io
- Social Media: Follow us on mastodon.social as @SleeperOS.

Once again, thank you for choosing Sleeper OS. We are excited to have you with us and look forward to seeing what you'll achieve with your new operating system. Happy computing!



Welcome to Sleeper OS—your journey begins here.

